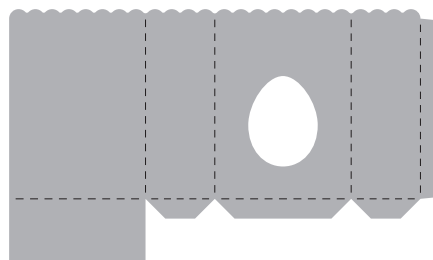


## Easter Treat Box

Size the SVG file to nine inches wide (while keeping the proportions).

The finished box measures about three inches wide, four inches high and 1.5" deep.

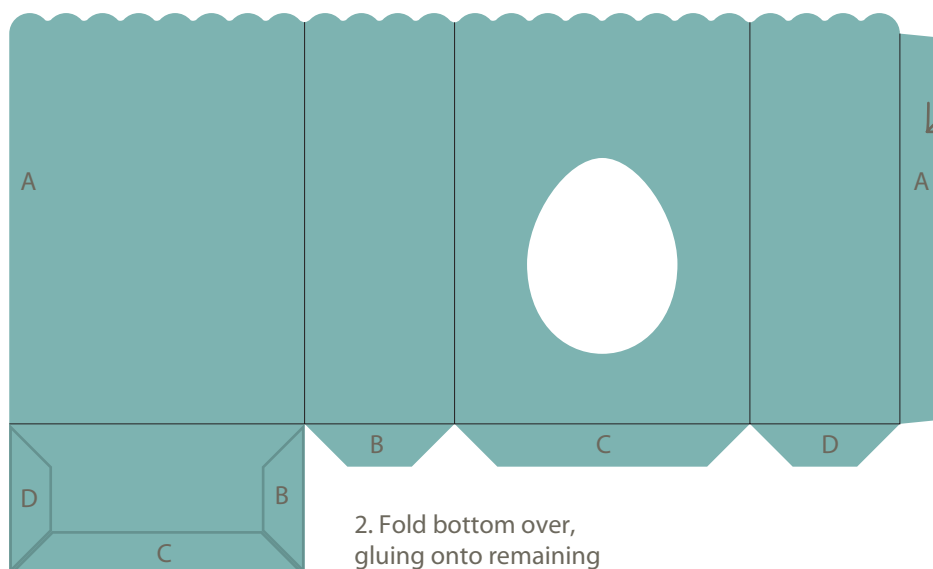
The "celebrate" stamp shown is from the Happy Easter Stamp Set from Echo Park (EA100044).



box  
9" wide



Shown with cellophane bag inside (filled with Cadbury Mini Eggs), tied with a double-knotted white ribbon.



1. Glue side tab into place forming box shape.

2. Fold bottom over, gluing onto remaining three tabs

If you have any issues or questions, please visit the FAQs section of our website or the SVG101 section of our Blog for FAQs and how-to videos. If you still have a question, you can click on "Contact Us" on SVGcuts.com. Thank you for visiting us, and as always, "Happy Crafting!"

Mary